



OT Security and Risk Management Platform

Comprehensive Platform of Effective Cyber and Risk Management Solutions for Safeguarding Cyber Physical Systems and Advancing Compliances

Radiflow is a global leader in Cyber-Physical Systems (CPS) security for critical infrastructure and industrial automation. Our deep industrial cyber expertise empowers operators to continuously safeguard their operations, manage risk, optimize security budgets, and comply with regulations and best practices.

Comprehensive Lifecycle Coverage

- **Identify:** Map all OT assets and assess the related risks according to business importance.
- **Protect:** Deliver comprehensive asset and connection information to firewalls, NACs and SRA's.
- **Detect:** Passively monitor traffic to flag anomalies or unauthorised commands.
- **Respond:** Prioritise alerts and provide pre-defined playbooks for optimised response.
- **Govern:** Audit systems and align with NERC, NIST, IEC, and NIS2 standards.





iSID

Visibility and Anomaly Detection

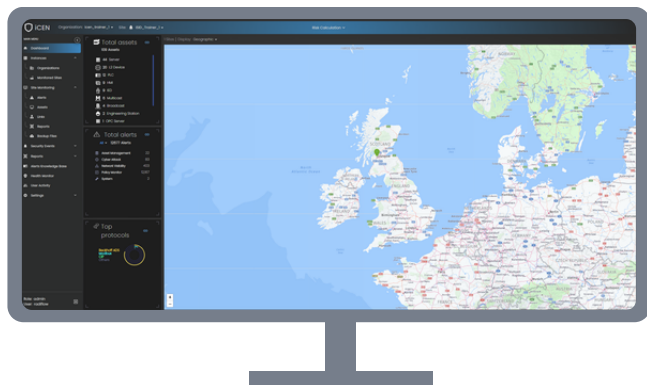
Radiflow's OT visibility and threat detection solution, iSID, bolsters operational resilience against cybersecurity threats across industrial operations and critical infrastructure. It maximises security posture and compliance with emerging cyber regulations and directives, delivering significant business value. Passively monitoring the network, iSID automatically discovers assets and builds an accurate asset inventory that includes roles and impacts on the OT environment.

iSID automatically learns network, asset, and communication behavior to establish a normal operational baseline, then continuously detects anomalous activity. Operating in numerous OT industrial environments for many years, iSID monitors generations of legacy and modern asset types as well as their communications using standard and proprietary protocols. iSID delivers network visualisation, threat detection, alerting, and configuration of rules for devices and protocols.



iCEN

Centralised monitoring and risk management across the OT estate



Radiflow solutions may be deployed according to the needs of the operator and where they can deliver the most value. For example, iSID can be deployed at a central location (SOC/HQ) or locally at remote sites, or a mix of the two.

iCEN enables enterprises with multiple sites to monitor and manage their remote iSID installations centrally - eliminating the need for remote security staff.

From a single pane of glass, iCEN:

- Streamlines management of the activities of multiple instances of the iSID servers.
- Collects and shares cyber data between multiple iSIDs and CIARA instances.
- Schedules and initiates CIARA risk assessments per site and at enterprise level.

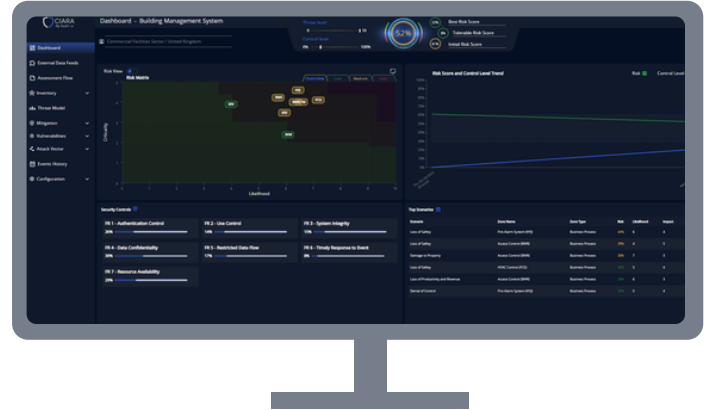
Via a user-friendly, web interface, iCEN delivers a unified view of enterprise-wide and site-specific security and risk posture. With a single click, users can dive into the results at any site.



CIARA

OT Risk Management

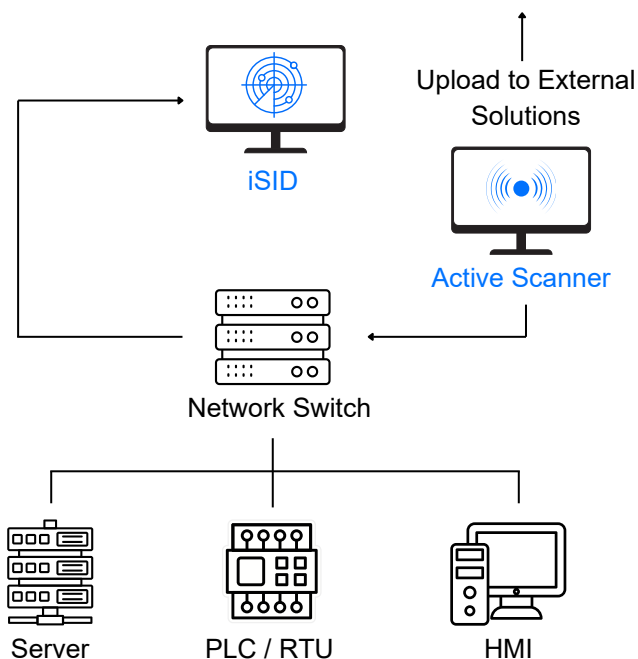
Radiflow CIARA is the first of its kind ROI-driven risk assessment and management solution for industrial networks. Receiving data automatically from iSID, Active Scanner, and / or 3rd party solutions, CIARA executes frequent risk assessments that empower CISOs and other stakeholders to optimise their OT-security expenditure and ensure the effectiveness of threat mitigation controls in accordance with NIS2, IEC62443, NIST CSF, and industry best practices.



CIARA utilises a threat intelligence based Breach and Attack Simulation (OT-BAS) engine for assessing risk. CIARA ingests thousands of data points including network, asset, locale, industry, adversary capabilities, and attack tactics. CIARA will then automatically calculate the per-zone / per-site / overall likelihood of attacks and determines the impact on business processes. CIARA assesses the effectiveness of corresponding risk mitigation measures, both installed and proposed, helping operators consistently minimise risk at optimal cost.

Active Scanner

Enrich asset inventory details with OT queries



Active Scanner complements or replaces iSID's passive monitoring of industrial networks. Using safe and targeted methods, Active Scanner directly queries assets to obtain deeper data such as modules, versions, and patch levels. Active Scanner improves threat detection, risk management, and other cybersecurity solutions with a finer level of accuracy in alert generation, asset management, risk assessment, and compliance.

Active Scanner delivers a holistic network visibility picture for multiple sites as it discovers assets, actively collects data, and organises it for upload to asset management, risk management, and other external solutions.

Active Scanner working in tandem with iSID and / or generating files for upload



vSAP RF-2180 Smart Collector

- Aggregation and tunneling of monitored network traffic to the iSID Threat Detection System for analysis.
- Three 1Gbit secure, passive and non-interfering Ethernet ports for incoming traffic.
- Unidirectional transmission of mirrored network traffic through one-way link Compression of industrial protocols at 1:10 ratio.
- Encrypted tunnel over the transport network Fit for challenging industrial environments.



Radiflow360 Dashboard

Radiflow360 is a next-generation, **OT Cybersecurity platform** that delivers **complete visibility, risk management, and streamlined incident response** - purpose-built for **mid-sized industrial enterprises**. By unifying previously siloed tools and manual processes, Radiflow360 empowers OT security teams to gain **real-time control** over their operational environments within a **single integrated platform**.

