

# Comprehensive Asset Management and Risk Management through Integrated Expertise and Cutting-Edge Technology

A compelling value proposition combines OTconnect's specialized cybersecurity services with Radiflow's innovative OT security solutions. This partnership fortifies the security frameworks of industrial networks, ensuring resilience and compliance with directives and standards like NIS2, IEC 62443, and NIST CSF.

## Obtaining and Analyzing Valuable Security Data

Radiflow's OT Security Platform includes an advanced network-monitoring and threat-detection solution that automatically maps operational technology (OT) assets and their associated traffic flows. Simultaneously identifying potential vulnerabilities and detecting indicators of compromise, the solution provides clear visibility into the network's operational elements and threat vectors.

Building on these Radiflow capabilities, OTconnect leverages its domain expertise to analyze assets and vulnerabilities. OTconnect customizes cybersecurity strategies that align with the unique needs and risk profiles of the client. This bespoke approach ensures that cybersecurity measures are not only robust but are also precise and relevant to the operational context.



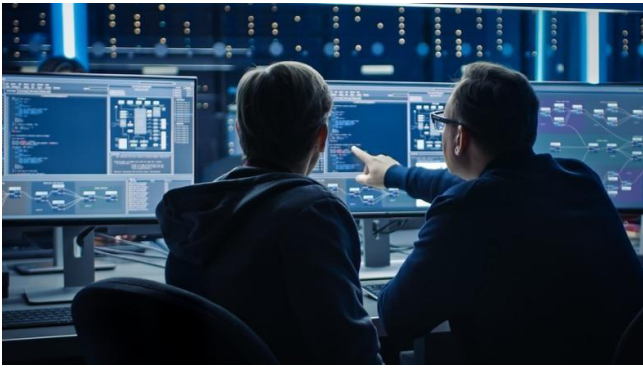
## Minimizing Risk While Optimizing Security Posture

Ingesting data directly from the network and/or other solutions in the security stack, Radiflow promptly generates comprehensive risk assessments for each industrial site, zone, machine, and business process, as well as for the entire operation.

OTconnect's expertise in deploying and optimizing the Radiflow Platform delivers a refined analysis of the operation's security posture, taking into account relevant standards and best practices, as well as operation-specific nuances. OTconnect pinpoints security gaps and the efficacy of specific mitigations, delivering an optimized risk-reduction plan.

## Risk-Based Approach to Optimized Cybersecurity Investments

The strategic partnership between OTconnect and Radiflow promotes a risk-based cybersecurity methodology. This approach prioritizes interventions based on the probability and severity of attacks, ensuring that investments in cybersecurity yield maximum protective value. OTconnect's skilled application of this methodology helps clients achieve superior risk mitigation while directing resources to areas of highest impact.



## Delivering Value through Combined Technology and Expertise

By integrating Radiflow's advanced OT security solutions with OTconnect's strategic risk management expertise, this partnership not only boosts the security of industrial networks but also aligns cybersecurity efforts directly with business objectives.

Clients of OTconnect and Radiflow can expect a holistic service offering that covers every aspect of cybersecurity management—from initial asset mapping and vulnerability assessment through comprehensive risk analysis and mitigation strategies. This end-to-end approach ensures that industrial entities are not only protected against current threats but are also prepared for future attacks, thereby maintaining long-term operational integrity and business continuity.

## Take the Next Step Toward Enhanced Cybersecurity

We invite you to connect with us to explore how the combined expertise of OTconnect and Radiflow can safeguard your industrial operations. By choosing our integrated OT security approach, you are not just safeguarding your network against threats—you're taking a necessary, proactive step toward sustainable, compliant, risk-managed protection. Contact us today to schedule a consultation and begin your journey to a highly secure and resilient industrial environment.

# Radiflow

Radiflow develops OT Security and Risk Management solutions that ensure operational resilience and optimize cybersecurity expenditure. Radiflow's solutions enable local or centralized deployments, and integrate with leading technology-partner platforms. Now part of the Sabanci Group, Radiflow protects over 8,000 sites worldwide. Visit us at [www.radiflow.com](http://www.radiflow.com)

# OTconnect

OTconnect provides specialized OT monitoring and detection services for industrial control systems. We protect critical infrastructure by proactively identifying cyber threats. Our expert team ensures the security and resilience of industrial environments, helping maintain operational continuity. Trust OTconnect to safeguard your OT assets against evolving cyber risks.

Visit us at [www.otconnect.nl](http://www.otconnect.nl)