

Radiflow

Taking Risks? Not With Your OT Security

Radiflow is an Industrial Cyber-Security Solutions provider for critical business operations. Recognized by Gartner as sole vendor in both the OT Network Monitoring and Visibility and the Cyber-Physical Systems (CPS) Risk Management categories, Radiflow's solutions allow CISOs to continuously monitor and simulate attacks without disrupting critical industrial operations.



**Network
Visualization**



**Non-Intrusive
Breach & Attack
Simulation (BAS)**



**MSSP-Friendly
Architecture**



**Threat &
Anomaly
Detection**



**Optimization
of OT-Security
Planning**



**Compliance
Enabler for IEC
62443 & NIST CSF**



SEE

Network Visualization

Radiflow enables you to clearly see all your assets using a detailed presentation map of the entire OT network, down-drillable to all devices' properties, connections and vulnerabilities. Radiflow iSID's non-intrusive, non-destructive self-learning produces an accurate 'digital image' of the OT network. The model is used for operator visualization, as a baseline for anomaly detection and breach & attack simulations.



Network Presentation

iSID: Industrial Threat Detection

- Non-intrusive self-learning: topology, device properties, ports, protocols & vulnerabilities
- Complete network map, down-drillable to device properties, lifecycle & TI-derived vulnerabilities

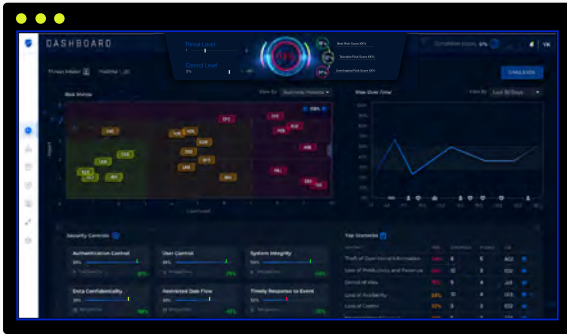
iSAP: Smart Collector

- WAN/LAN-friendly data transfer from remote facilities to a central instance of iSID
- Up to 10x reduction in bandwidth consumption using Radiflow's unique compression & filtering algorithm.

KNOW

Risk Posture & Network Characteristics

With Radiflow you're continuously aware of who is threatening you and where your network stands in terms of risk and potential impact. Our risk assessment utilizes a unique OT BAS (breach & attack simulation) technology, which incorporates thousands of data points for attacker capability (from multiple threat intelligence sources), protections installed and the predicted impact of an attack on operational units. The results of the simulation make up the basis for various decision-maker reports, and for a highly-optimized mitigation & hardening plan.



Main Dashboard Risk Assessment & Monitoring

CIARA: Industrial Risk Assessment & Management

- Enterprise Management; one dashboard to view all operational sites
- Non-Intrusive Breach & Attack Simulations (OT-BAS)
- Coverage of all IEC 62443 FRs + Supply Chain attacks
- Key Indicators for Risk, Mitigation Controls and Threat Level
- Vulnerability analysis, using multiple TI sources (MITRE ATT&CK, others), per zone and business process
- Customizable reports for auditing and management

ACT

Ongoing hardening and ROI optimization

Unlike traditional risk management tools, Radiflow's solutions provide a unique data-driven framework to manage your OT cyber risk. The OT-BAS engine automatically simulates hundreds of what-if scenarios, towards generating an ROI-optimized cybersecurity roadmap, with multiple prioritization options to meet your operational needs and budgetary constraints. Implementation is assisted with built-in tools for progress tracking and reporting.



OT Security Optimization

CIARA: Industrial Risk Assessment & Management

- ROI-optimized mitigation plan based on preferences & budget
- Mitigation insights for ongoing network hardening
- Quarterly implementation planner

iSID: Industrial Threat Detection

- Alerting rules & device communication policies
- 3rd-party integrated solutions with leading firewall vendors

iSEG: DPI Secure Gateway

- DPI Firewall
- Remote access management

MONITOR

MSSP-Friendly Threat & Risk Monitoring

The cyber threat landscape, and especially is constantly changing and especially so in the emerging OT cyber space. Radiflow provides continuous monitoring of network activity to alert you of any anomalies that might indicate a cyber breach, as well as continuous analysis of changes in the threat landscape and their impact on the enterprise risk posture. This ongoing aspect of the SEE-KNOW-ACT workflow, which is critical to enterprises' cyber resilience, is made easy using the Radiflow solution.



Central Monitoring

CIARA: Industrial Risk Assessment & Management

- Continuous attack flow simulation and updating of key risk indicators using up-to-date APT & Digital Image data
- Enriched security alerts with current asset impact & risk information to prioritize event handling for SOC analysts

iSID: Industrial Threat Detection

- Continuous monitoring of network traffic patterns to alert on operational changes & anomalies
- Detection of cyber attacks and malicious network behavior

iCEN: Central Monitoring

- Single-pane monitoring & management of multiple iSID instances

OT Cyber Security for a variety of industries

Visit [Radiflow.com](https://radiflow.com) to learn how Radiflow can secure and optimize cybersecurity expenditure in a wide variety of industrial sectors.



Manufacturing



Power



Oil & Gas



Water & Wastewater



BMS



Transportation

About

Radiflow develops unique OT cybersecurity tools to protect and ensure organizations' digital resilience. The company closely collaborates with Managed Security Service Providers to oversee the discovery and management of all relevant data security points. Founded in 2009, Radiflow has offices and partners in Europe, USA and APAC. Its field-proven solutions are installed at over 6000 sites around the globe.